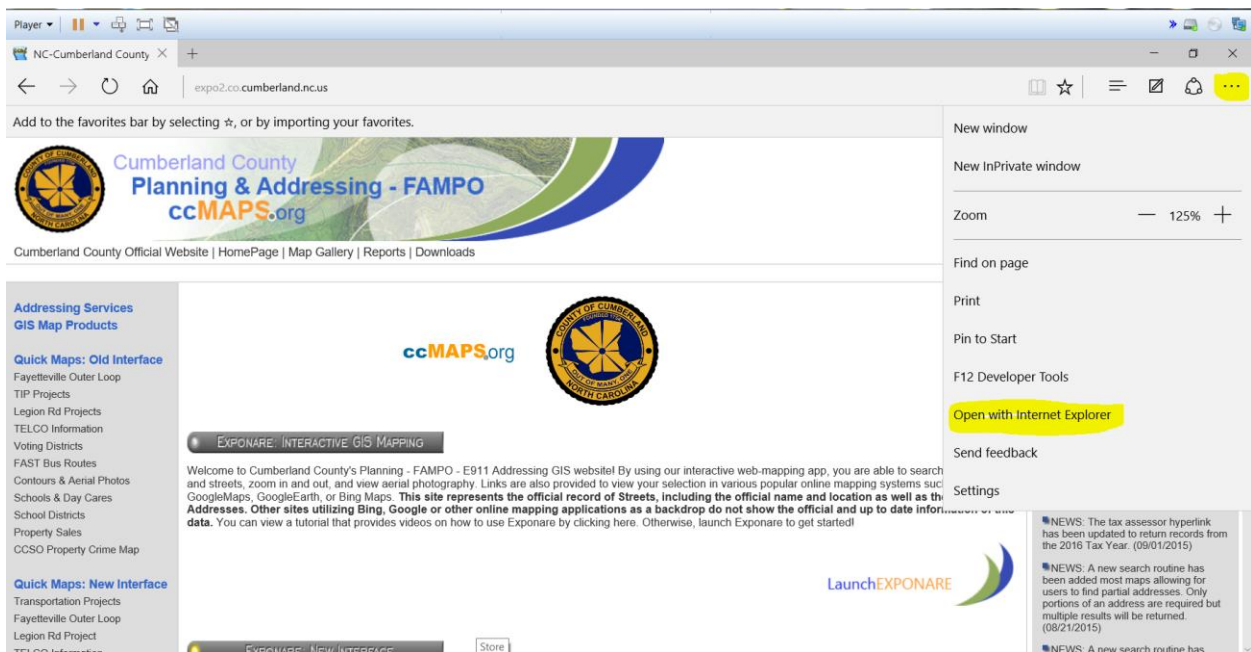


## Using Windows 10 Edge Browser with www.ccmaps.org

The default browser included with Windows 10 is called Edge and is very similar to Chrome. This browser does not function correctly with the “old” Exponare interface without choosing to open in Internet Explorer from the menu.

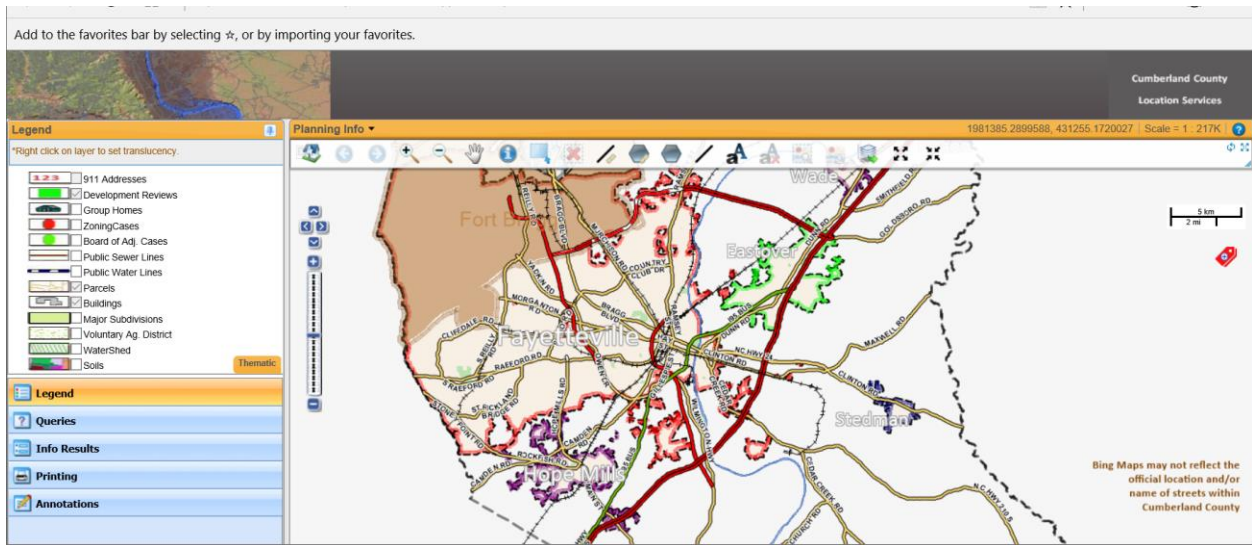
To open in Internet Explorer press the ellipses (three dots at top right corner of the browser window) and choose Open with Internet Explorer as shown below.

This should allow you to use the old interface which is somewhat faster than the new interface.



Another alternative is to use the new interface that supports most common browsers such as Chrome, Safari, Internet Explorer etc. To choose this method just press the second gray button/icon in the top center of the page as shown below. This interface is somewhat slower and has some features the current/old interface does not. We suggest that you be patient when zooming in/out and panning the map. Please let the map redraw before choosing another action such as query or another pan/zoom operation.

Below is a screenshot of the new interface supporting Edge, Chrome and most other browsers.



If you have other questions either contact us by emailing [mosbourn@co.cumberland.nc.us](mailto:mosbourn@co.cumberland.nc.us) with a subject line of Exponare browsers or call at 910-678-7608.